

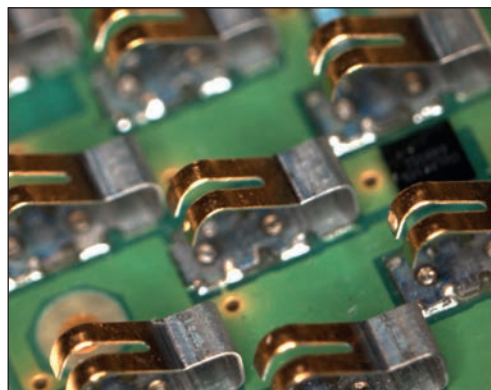
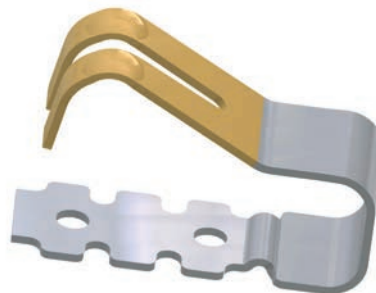
## DODUFLEX Rugged Contact Spring

### Versatile SMD miniature contact spring for printed circuit boards

Our contact springs for the automated fitting of printed circuit boards come in blistertape. So the packaging is suitable for high-series manufacturing with off-the-shelf SMD pick-and place machines. DODUFLEX provides extremely high contact reliability through bifurcated contacts, AuCo-coating and overload protection. This contact spring is already in successful use in fields such as medical technology and white goods. It is available on short term without tool costs at prices based on our price list.

### Properties

- X10CrNi188 R1700-1900, Ni-Flash all over
- In contact area selective AuCo >0.3µm
- Two contact points
- Soldering area selective Sn 3-5µm
- Material thickness 0.1mm
- Part width 1.5 mm
- Part height 2.7 mm
- Comes in blistertape 12mm
- Feed 4mm
- 8000 parts per coil
- Required space on printed circuit board: 4.1 x 1.5mm<sup>2</sup>



### Electrical Characteristics

a. Typical volume resistance (incl. contact resistance):

**Measuring conditions:**  
Measuring current 1mA, measuring voltage limited to a maximum of 20mV, contacting with Au-rivet, both contact points parallel, contact spring soldered to printed circuit board

contact force [N]	resistance [mOhm]
0,1	35
0,4	27
0,6	25

Contacting on only one spring arm will increase the resistance by approx. 20mOhm.

b. Temperature increase/ampacity:

**Measuring conditions:** Contact spring soldered to printed circuit board, contacting of both contact points parallel with 0.4N, non-contact measurement of contact spring temperature.

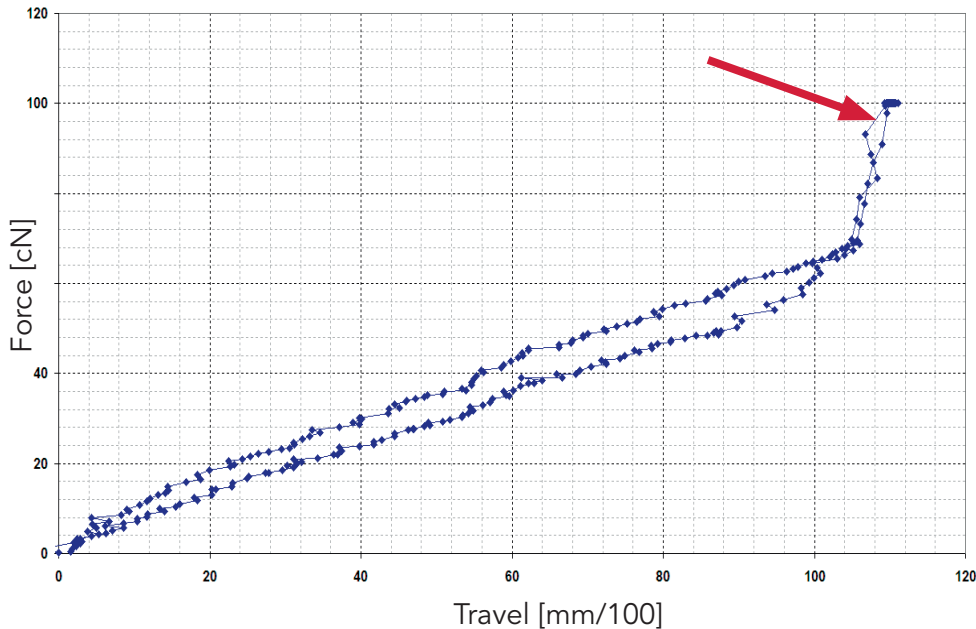
current [A]	temperature increase [K]
2	10
3	26
4	50
5	90

### Please note:

Ampacity may be increased without tool costs by change of coating. Alternatively paralleling of contact springs.

## DODUFLEX

Net prices\* in €  
per 1000 pieces



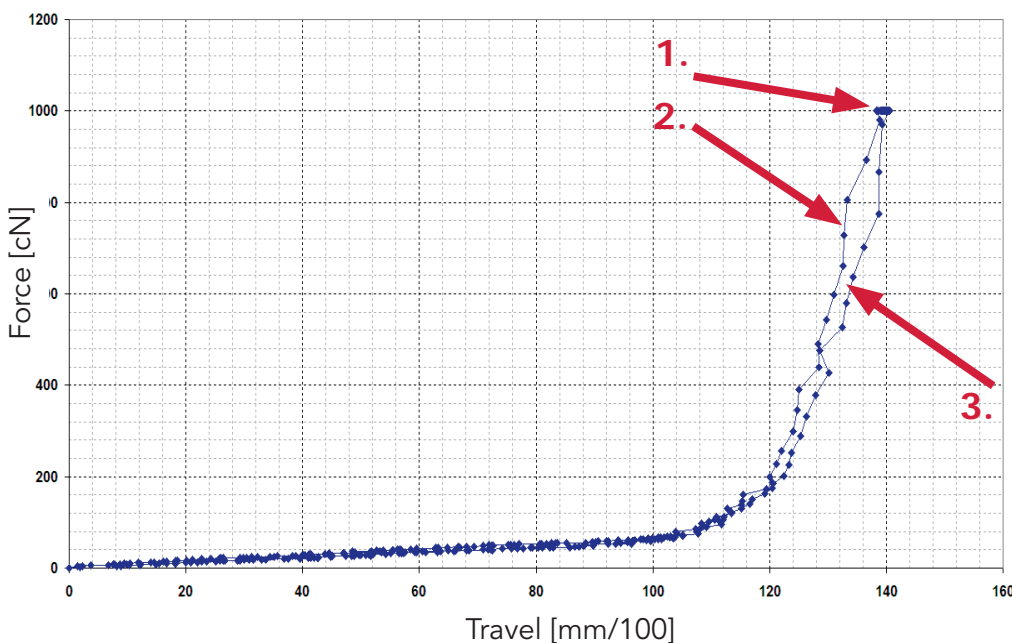
Quantity * 1000	€ / 1000
1	800
8	250
16	200
32	150
64	100
104	75
256	60
1000	48
2000	42
3000	40

\* Prices incl. precious metal and packaging in blister tape. Shipping costs not included. No tool costs.

Delivery period: Up to 8,000 pieces on stock, higher quantities upon agreement

### Mechanical Characteristics: (both arms parallel)

- spring rate c: 0.65 N/mm
- maximum contact force 0.65 N at 1 mm travel distance



### Your DODUCO contacts:



Sales: Gero Seifried  
gseifried@doduco.net  
Phone +49 (0)7231 602-372



Engineering: Dietmar Späth  
dspaeth@doduco.net  
Phone +49 (0)7231 602-260

### Overload protection by integrated travel stop.

No plastic deformation under the shown load of 10N in the Z-axis.

1. 10 N, 1.4 mm travel
2. curve load application
3. curve load release