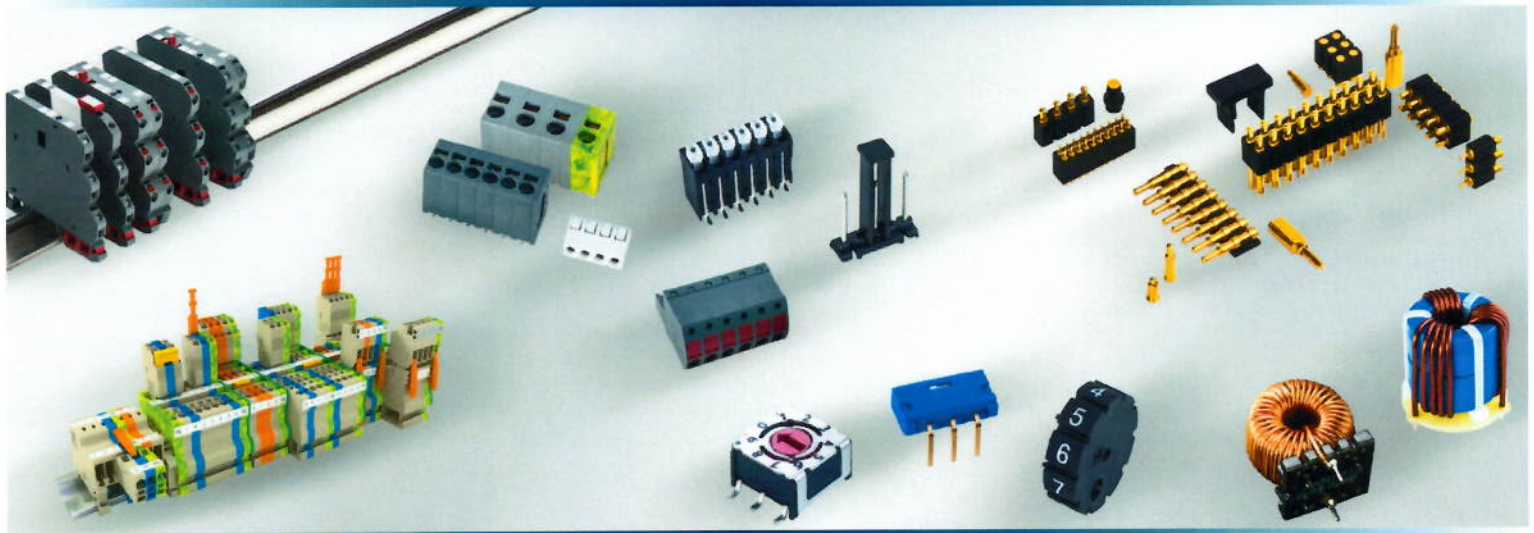




# INTERKONT

WE CONNECT WORLDS



**PTR**

A Phoenix Mecano Brand



**HARTMANN**

A Phoenix Mecano Brand



**HARTU**

A Phoenix Mecano Brand

**INTERKONT Berger GmbH**  
Fraunhoferstrasse 5 - D-87700 Memmingen  
Tel: +49 8331 97990 Fax: +49 8331 979910  
info@interkont.de  
[www.interkont.de](http://www.interkont.de)



More Than 100 Producers From A Single Source  
 Mehr als 100 Hersteller aus einer Hand

**MAWEIN** MASCHINENBAU  
 WERKZEUGBAU  
 INSTANDHALTUNG

**MRO** MAINTENANCE  
 REPAIR TOOLING  
 OPERATIONS EQUIPMENT

SCHEDULED SERVICE CORRECTIVE  
 DEVICE ACTION PREVENTIVE  
 MECHANICAL ENGINEERING



**PTR**

A Phoenix Mecano Brand



**HARTMANN**

A Phoenix Mecano Brand



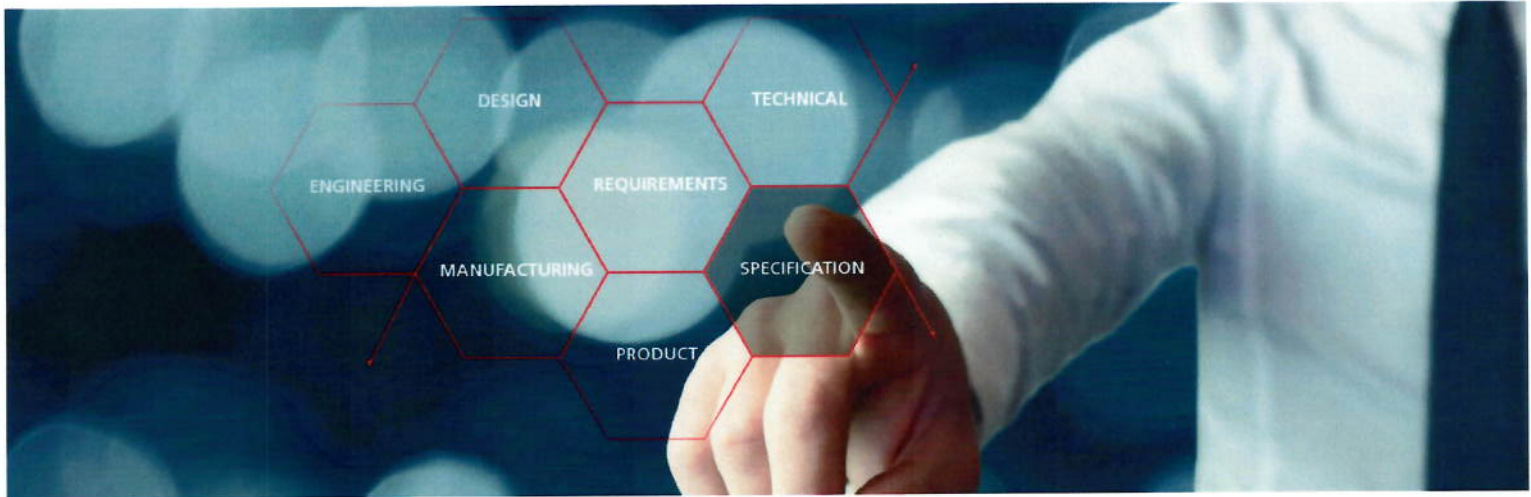
**HARTU**

A Phoenix Mecano Brand

**Innovative solutions:** electromechanical components, test technology equipment and customer-specific inductors

**Competencies:** development and design of standard as well as customer-specific solutions / tool and mould making / precision injection-moulding / turning / reliability laboratory and quality assurance / pressing, laquering winding

**Fields of application:** machinery and plant engineering / measurement and control technology / electrical engineering / automotive and rail engineering / energy technology / medical technology / aerospace technology / transferring energy, signals and data in the sectors of safety and security engineering, automation, network monitoring and telecommunications



More Than 100 Producers From A Single Source

Mehr als 100 Hersteller aus einer Hand

**MAWEIN** MASCHINENBAU  
WERKZEUGBAU  
INSTANDHALTUNG  
**MRO** MAINTENANCE  
REPAIR TOOLING  
OPERATIONS EQUIPMENT  
SCHEDULED SERVICE  
DEVICE SERVICE  
CORRECTIVE  
FUNCTION ACTIONS  
PREVENTIVE  
MECHANICAL ENGINEERING



**PTR**  
A Phoenix Mecano Brand



**HARTMANN**  
A Phoenix Mecano Brand



**HARTU**  
A Phoenix Mecano Brand

## I. CONNECTION TECHNOLOGY

Special designs of PCB Terminal Blocks and PCB Multi-Connector Systems such as special lengths for soldering pins, different colours, partly-assembled PCB Terminal Blocks, marking with pad printing, inkjet printing or laser marking are just as much a part of the scope of delivery as the supplying of modules, fully-populated PCBs with or without pre-assembled cables as well as PCB Terminal Blocks and Pin Strips in tape-on-reel, tube or tray packaging.

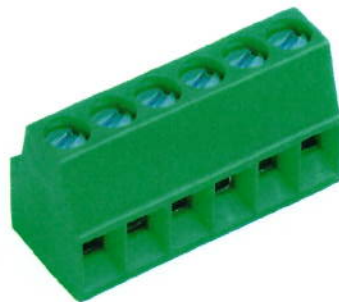
### PCB TERMINAL BLOCKS

### PCB MULTI-CONNECTOR SYSTEMS

#### PCB TERMINAL BLOCKS SCREW TERMINAL BLOCKS



Wire Guard Type

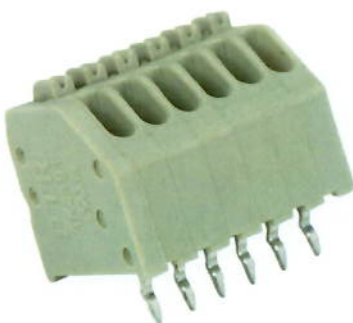


Lift Type



Excenter Type

#### SPRING TERMINAL BLOCKS



Push-In Type



Tension Spring Type



SMD Terminal Block AK4091

More Than 100 Producers From A Single Source  
Mehr als 100 Hersteller aus einer Hand

**MAWEIN** MASCHINENBAU  
WERKZEUGBAU  
INSTANDHALTUNG  
**MRO** MAINTENANCE  
REPAIR TOOLING  
OPERATIONS EQUIPMENT  
SCHEDULED SERVICE CORRECTIVE  
DEVICE ACTION PREVENTIVE  
MECHANICAL ENGINEERING



**PTR**

A Phoenix Mecano Brand



**HARTMANN**

A Phoenix Mecano Brand



**HARTU**

A Phoenix Mecano Brand

## PCB MULTI-CONNECTOR SYSTEMS SCREW TERMINAL BLOCKS



Wire Guard Type



Lift Type



Excenter Type

## SPRING TERMINAL BLOCKS

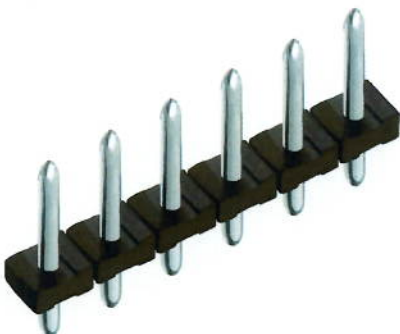


Push-In Type



Tension Spring Type

## PIN STRIPS



Pin Strips

More Than 100 Producers From A Single Source  
 Mehr als 100 Hersteller aus einer Hand

**MAWEIN** MASCHINENBAU  
 WERKZEUGBAU  
 INSTANDHALTUNG

**MRO** MAINTENANCE  
 REPAIR TOOLING  
 OPERATIONS EQUIPMENT

SCHEDULED SERVICE  
 DEVICE SUPPLY  
 CORRECTIVE ACTIONS  
 PREVENTIVE MECHANICAL ENGINEERING



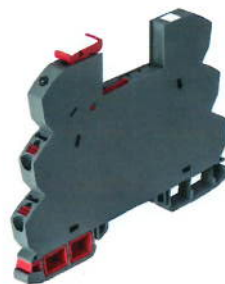
## II. INTEGRATED CONNECTION TECHNOLOGY

The integrated connection technology includes electrical contact technology directly into the end product, meaning that connection elements in which the PCB is connected directly by means of a plug-in connection. There is no need for time-consuming manual soldering or for the expensive use of a soldering robot. Combining wire connection technology with solder free PCB contacts and jumper contacts in one device reduces electrical resistance.

### SCREW TECHNOLOGY



INS250-P-BAGY



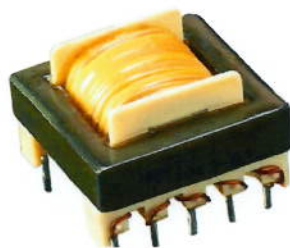
INS260-P-BAGY



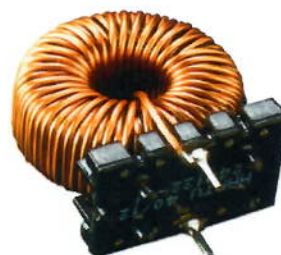
INM260-P-BAGY

### PUSH-IN TECHNOLOGY

## III. INDUCTORS



SWITCHED MODE POWER



CHOKES WITH IRON POWDER CORE MATERIALS



COMMON MODE CHOKES



PFC CHOKES

More Than 100 Producers From A Single Source

Mehr als 100 Hersteller aus einer Hand

**MAWEIN** MASCHINENBAU  
WERKZEUGBAU  
INSTANDHALTUNG  
**MRO** MAINTENANCE  
REPAIR TOOLING  
OPERATIONS EQUIPMENT  
SCHEDULED SERVICE  
DEVICE SUPPLY  
CORRECTIVE ACTIONS  
PREVENTIVE MECHANICAL ENGINEERING



A Phoenix Mecano Brand



**HARTMANN**

A Phoenix Mecano Brand



**HARTU**

A Phoenix Mecano Brand

#### IV. TEST PROBES AND INTERFACE PIN BLOCKS

##### TEST PROBES

In the sectors of telecommunications, medical technology, aeronautics and aerospace, the automotive industry and many others, PTR HARTMANN test probes are used as secure and reliable contact elements for testing PCBs (ICT+FT) and cable harnesses. One additional and steadily growing field of applications is the use of test probes as a charging contact for industrial applications or PCB connectors as a single contact or multi-pole contact block.



**TEST PROBES FOR  
IN-CIRCUIT-TEST**



**STANDARD TEST PROBES  
30 MIL - 177 MIL  
(0.76 MM - 4.50 MM)**



**TEST PROBES FOR  
CABLE TEST**



**COAXIAL AND HIGH  
FREQUENCY TEST PROBES**



**BATTERY TEST PROBES  
AND PCB CONNECTORS**



**HIGH-CURRENT  
TEST PROBES**



**PNEUMATIC TEST PROBES**



**FIXTURE CUSTOMIZING**

More Than 100 Producers From A Single Source  
Mehr als 100 Hersteller aus einer Hand

**MAWEIN** MASCHINENBAU  
WERKZEUGBAU  
INSTANDHALTUNG  
**MRO** MAINTENANCE  
REPAIR TOOLING  
OPERATIONS EQUIPMENT  
SCHEDULED SERVICE CORRECTIVE  
ACTION PREVENTIVE  
MECHANICAL ENGINEERING



**PTR**

A Phoenix Mecano Brand



**HARTMANN**

A Phoenix Mecano Brand



**HARTU**

A Phoenix Mecano Brand

## INTERFACE PIN BLOCKS

PTR HARTMANN's spring-loaded battery probes provide an extremely reliable and precise connection solution, which is ideal for use in a series of demanding application requirements in the electronic connections sector. There are many possible applications, starting with board-to-board contacting, directly on the PCB, to hand-held devices as a charging contact, and up to battery chargers for high-quality laptops, smartphones, e-bikes/pedelecs and a large number of additional applications - battery probes and also spring-loaded pogo pin-type contacts are used in all situations to transmit battery charging currents, but also to transmit signals.



Series 5322 - FKB - Vertical



Series 5322 - PKB - Vertical

More Than 100 Producers From A Single Source  
 Mehr als 100 Hersteller aus einer Hand

**MAWEIN** MASCHINENBAU  
 WERKZEUGBAU  
 INSTANDHALTUNG

**MRO** MAINTENANCE  
 REPAIR TOOLING  
 OPERATIONS EQUIPMENT

SCHEDULED SERVICE  
 DEVICE SUPPLY  
 FUNCTION ACTIONS  
 CORRECTIVE PREVENTIVE  
 MECHANICAL ENGINEERING



## VI. SWITCHES

ROTARY CODE SWITCHES

DIP SWITCHES

SLIDE SWITCHES

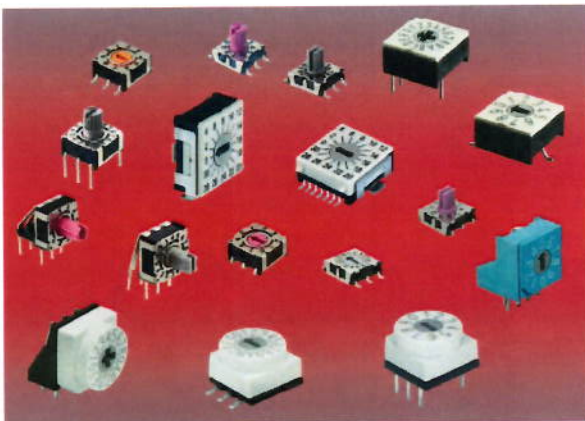
TACT SWITCHES

MICRO SWITCHES

SWITCHES AND JACKS

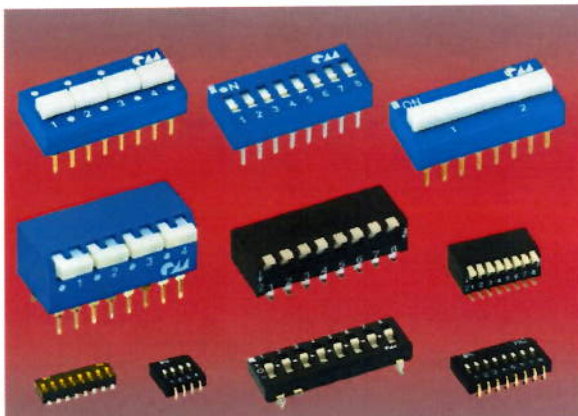
DUAL PUSH BUTTON SWITCHES

### ROTARY CODE SWITCHES



PTR HARTMANN rotary code switches offer highly modern technology for industrial application. Robust contact pins with pure tin plating guarantee a trouble-free assembly and safe bonding with all standard soldering materials. Due to the abrasion-resistant hard gold plating on the contacts, contact resistances remain low and constant. Switches with both 3+3 and 4+1 connection systems can be supplied with various control elements.

### DIP SWITCHES



As an alternative to rotary code switches, DIP switches can be supplied in various sizes, spacings and number of poles, with THT or SMT pins.



More Than 100 Producers From A Single Source

Mehr als 100 Hersteller aus einer Hand

**MAWEIN** MASCHINENBAU  
WERKZEUGBAU  
INSTANDHALTUNG  
**MRO** MAINTENANCE  
REPAIR TOOLING  
OPERATIONS EQUIPMENT  
SCHEDULED SERVICE  
DEVICE SUPPLY  
FUNCTION ACTIONS  
CORRECTIVE PREVENTIVE  
MECHANICAL ENGINEERING



**PTR**

A Phoenix Mecano Brand



**HARTMANN**

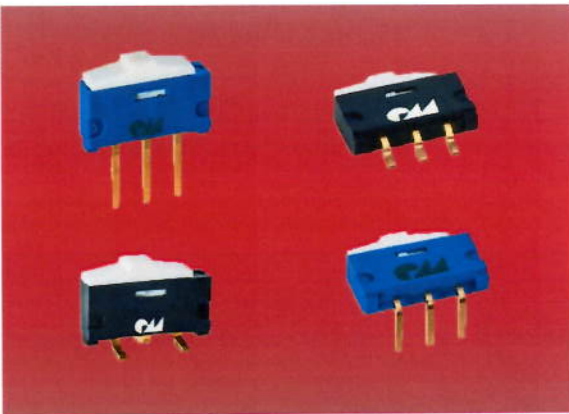
A Phoenix Mecano Brand



**HARTU**

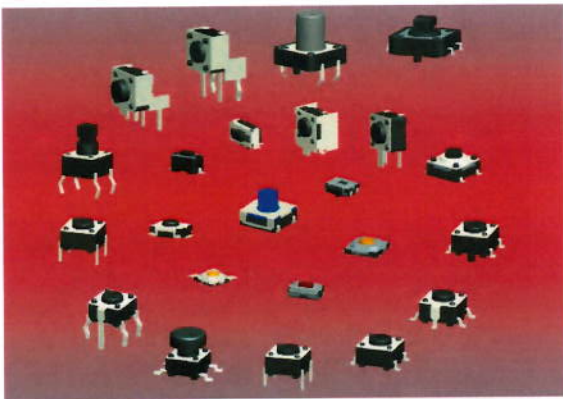
A Phoenix Mecano Brand

## SLIDE SWITCHES



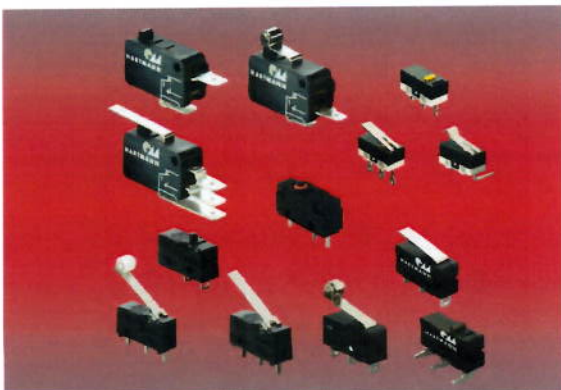
This series comprises miniature slide switches that can be used as ON/OFF switches or as changeover switches. The switches are a high-end alternative to jumpers, but can also be used as address or code switches in applications that require only a limited number of settings.

## TACT SWITCHES



Tact switches for different applications with horizontal and vertical actuation in all established sizes. Available for Reflow- and wave soldering with different pin designs. More varieties are available on request.

## MICRO SWITCHES



Micro switches, also called snap-action switches, can be supplied in designs A, B and D of DIN41635. Micro switches are used predominantly as limit switches. The snap-action switches are available as NC-, NO and changeover contacts with various actuating forces and switching capacities.

More Than 100 Producers From A Single Source  
 Mehr als 100 Hersteller aus einer Hand

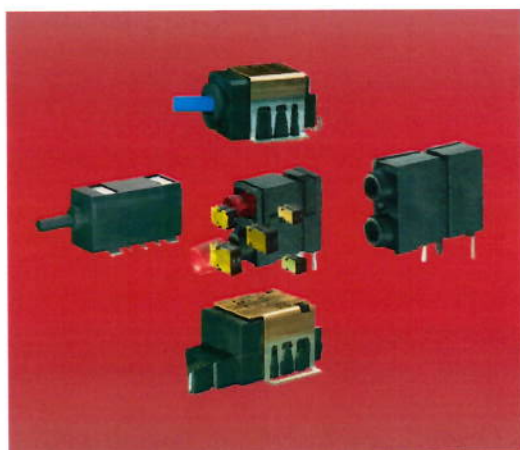
**MAWEIN** MASCHINENBAU  
 WERKZEUGBAU  
 INSTANDHALTUNG

**MRO** MAINTENANCE  
 REPAIR TOOLING  
 OPERATIONS EQUIPMENT

SCHEDULED SERVICE  
 DEVICE SUPPLY  
 FUNCTION CORRECTIVE  
 ACTIONS PREVENTIVE  
 MECHANICAL ENGINEERING



## SWITCHES AND JACKS



Toggle switches and push-button switches as well as switch jacks for front panel assembly comply with the relevant standards of industrial electronics, DIN 41494.

## DUAL PUSH BUTTON SWITCHES



Dual push-button switches can be chosen from six basic series. From the smallest dimension of 15.0 x 6.0 mm to the largest, 33.0 x 8.0 mm, the dual push button switches can be supplied with the standard codes and with 10 or 16 switch positions.

More Than 100 Producers From A Single Source  
 Mehr als 100 Hersteller aus einer Hand

**MAWEIN** MASCHINENBAU  
 WERKZEUGBAU  
 INSTANDHALTUNG  
**MRO** MAINTENANCE  
 REPAIR TOOLING  
 OPERATIONS EQUIPMENT  
 SCHEDULED SERVICE  
 DEVICE SERVICE  
 SUPPLY FUNCTION  
 ACTIONS  
 CORRECTIVE PREVENTIVE  
 MECHANICAL ENGINEERING



**INTERKONT**

ELEKTRONIK & MECHATRONIK & VERTRETUNGEN

[www.interkont.de](http://www.interkont.de)

WE CONNECT WORLDS Automation • Electromechanics • Cable Assembly • Test Equipment

**MENTOR** INNOVATIONS FOR THE FUTURE  
**FLS W** VISION

**DODUCO**

**MARQUARDT**

**E-T-A** ENGINEERING TECHNOLOGY

**HARTING**

**ISABELLENHÜTTE**  
 Innovation aus Tradition

**fischer**  
 elektronik  
 to cool to protect to connect

**HARTU**  
 A Phoenix Mecano Brand

**HARTMANN**  
 A Phoenix Mecano Brand

**KAISER+KRAFT**  
 ALLES FÜR DIE FIRMA

**Wolfgang Warmbier**

**WERKÖ**  
 HIGH PERFORMANCE TOOLS

**WKS**

**PTR**  
 A Phoenix Mecano Brand

**BOPLA**  
 A Phoenix Mecano Company

**FEINMETALL**  
 Contact Technologies



**CONTA CLIP**

**Aero-Motive**  
 Quality. Made with passion.

**FRIEDEMANN WAGNER**  
 Handhabungstechnik

**ingun**  
 Kontaktstifte · Prüfadapter

**Telegärtner**  
 KARL GÄRTNER GMBH

**SCHLEGEL**  
 ELEKTROKONTAKT

**CK TECHNOLOGIES, INC.**

**RAFI**

Cable Assembly

**schriever**

**rakon Xpress**



Feindrahtwerk  
**ADOLF EDELHOFF**

**ceramics**

**PACK**  
 LitzWire

**NGK BERYLCO**  
 NGK

**exens**  
 SOLUTIONS

**LAPP KABEL**

**GARNISCH**

**HELUKABEL**

**HUBER+SUHNER**  
 Excellence in Connectivity Solutions

**Claudio Madeira Martins**  
 Product Manager / Project Manager / Technical Sales  
 Tel: +49 (0) 8331 9799 15  
 Mobile: +49 (0) 160 920 603 19  
[claudio.martins@interkont.de](mailto:claudio.martins@interkont.de)

**INTERKONT Berger GmbH**  
 Fraunhoferstraße 5  
 1. OG - Ost  
 87700 Memmingen  
[www.interkont.de](http://www.interkont.de)

**Anja Černe**  
 Managing Director  
 Tel: +49 (0) 8331 9799 12  
 Mobile SLO: +386 (0) 41 729 365  
 Mobile DE: +49 (0) 160 962 725 11  
[a.cerne@interkont.de](mailto:a.cerne@interkont.de)

